

# HPL FOR DOORS

DUROPAL HPL  
STOCK PROGRAMME  
2025-2028



MADE IN GERMANY

**MAKE  
YOUR  
VISIONS  
WORK.**  
NATURALLY  
SUSTAINABLE

# SUSTAINABLE ENGINEERED WOOD MATERIALS FOR NEW AND EXISTING BUILDINGS

You'll always find a stylish, functional solution from Pfleiderer. Use our wide product portfolio to perfectly realise your ideas. From furniture fabrication and interior design to structural construction elements!

**MAKE  
YOUR  
VISIONS  
WORK.  
NATURALLY  
SUSTAINABLE**

## HPL FOR DOORS AVAILABLE IN A RANGE OF EXTRA-WIDE SIZES

Door manufacturers and joiners know that the material formats are crucial. Pfleiderer's HPL for doors stock range meets the requirements of our partners: our door decors are quickly and reliably available in the standard door sizes.

### DUROPAL HPL

High-pressure laminates in a wide range of selected DST system finish and texture combinations on DecoBoard products. The entire Design Collection is available from stock. Minimum offcut thanks to a range of formats from standard to non-standard widths, making it ideal for door construction.

### DUROPAL SOLIDCOLOR

The laminate SolidColor is coloured throughout, which makes it possible to realise contemporary and monochrome designs completely without visible edges. Also available in the product version SolidColor XTreme with anti-fingerprint effect!

### XTREME PRODUCTS

Supermatt XTreme products with anti-fingerprint effect available from stock:  
Duropal XTreme  
Duropal XTreme Touch  
Duropal SolidColor XTreme  
Duropal HPL XTreme plus



Simply scan the decor QR code to view all details.

All of the decors in the Design Collection are available in the DST system as a direct coating, as HPL, and mostly all as HPL in door format.



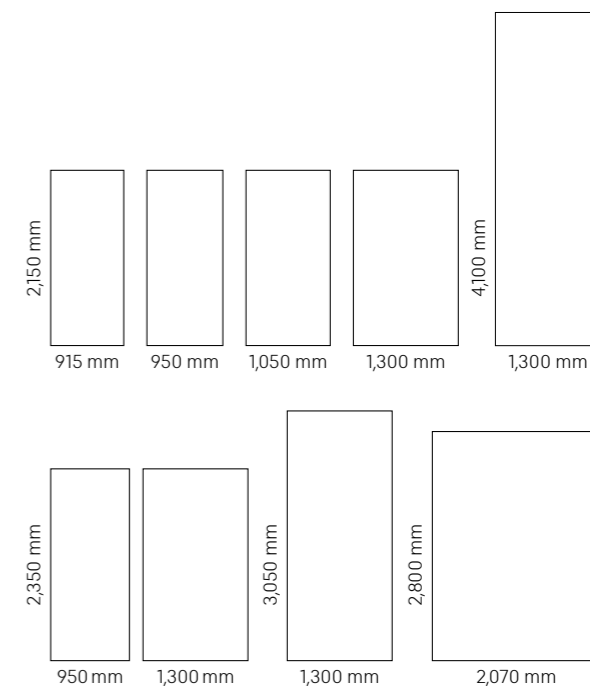
**100%** recycled wood content biogenic glue OrganicGlue healthier living environment

The majority of the DST-Express Collection are available as OrganicBoard Pure P2; all variants of the Design Collection are also available as Duropal Element Organic Pure P2 in the fast delivery programme.

## DOOR FORMATS

All door decors available in the following sizes:

Length	Width	Thickness
2,150	915 / 950 / 1,050 / 1,300	0.8
2,350	950 / 1,300	0.8
2,800	2,070	0.8
3,050	1,300	0.8
4,000	1,300	0.8



For details, refer to the table on the back.

- Individual HPL lengths between 2,050 and 5,300 mm and other HPL thickness sizes (including 2.0 mm) available on request.
- Matching decorative panels and HPL bonded boards are available in the DST system, the Pfleiderer decor and texture combination.
- Selected decors available as Duropal XTreme, Duropal XTreme Touch, Duropal HPL XTreme plus, Duropal SolidColor XTreme and PrimeBoard XTreme.

### EXTRA PROTECTION WITH microPLUS®:

- On request, all decors are also available with the antimicrobial and antiviral surface of the Duropal HPL microPLUS® product
- Antimicrobial effect after only 7 hours
- Antiviral effect after 24 hours\*

\* against enveloped viruses, in accordance with ISO 21702: 2019

In addition to Duropal HPL, Duropal XTreme, Duropal XTreme Touch and Duropal HPL XTreme plus are also certified with the "Blue Angel" eco-label.



[www.blauer-engel.de/uz76](http://www.blauer-engel.de/uz76)

# XTREME PRODUCTS

SUPERMATT PRODUCTS WITH ANTI-FINGERPRINT EFFECT

1

## VERTICAL SURFACES

Wall coverings, frontal

**PrimeBoard XTreme**  
**Duropol XTreme**  
**Duropol XTreme Touch**

2

## HORIZONTAL SURFACES

Storage compartments, shelving

**Duropol XTreme**  
**Duropol XTreme Touch**  
**Duropol SolidColor XTreme**

## HIGHLY STRESSED, HORIZONTAL SURFACES

Counters, bar, work surfaces

**Duropol HPL XTreme plus**  
**Duropol Compact XTreme plus**

3

### Application / highly stressed

vertical

horizontal

highly stressed  
horizontally

**PrimeBoard XTreme SuperMatt (XTSM)**

**Duropol XTreme (XMSM)**

**Duropol XTreme Touch (XMRT / XMVO)**

**Duropol SolidColor XTreme (XMSM)**

**Duropol HPL XTreme plus (XPSM)**

**Duropol Compact XTreme plus (XPSM)**

# SUSTAINABILITY



## WE ARE COMMITTED TO THE UNITED NATIONS GLOBAL COMPACT

Those who rely on wood as a raw material rightly expect an environmentally conscious “green” material. At Pfeleiderer we want to do full justice to this commodity, therefore we have been offering an extensive range of low-emission and environmentally friendly products for many years. Sustainability – in addition to ecological, social and economic aspects – as well as the careful use of natural resources are permanent pillars of our corporate philosophy. Consistent circular economy and wood recycling at the highest technological level as well as independent evaluation of our procurement, production and logistics processes ensure that we optimally harmonise qualitative and ecological requirements ensuring that we offer customers the best possible service, manufacturing and logistics processes as well as a corporate culture of accountability. We ensure that you can use our products with a clear conscience and recommend them to your customers.

### CORPORATE LEVEL



### PRODUCT LEVEL



### BUILDING CERTIFICATES



Learn more about our sustainability strategy:  
[pfeleiderer.com/sustainability](https://pfeleiderer.com/sustainability)

# HPL FOR DOORS



**HPL** Duropal HPL

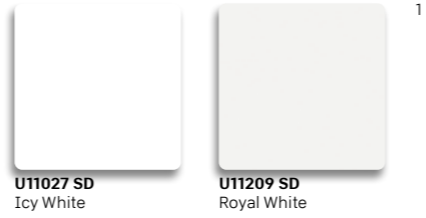
Decorative high-pressure laminate in postforming quality.

## OVER THE RAINBOW CHROMATIC PLAIN SHADES

						1
						2
						3
						4
						5
						6
						7
A	B	C	D	E	F	

						1
						2
						3
						4
						5
						6
						7
G	H	I	J	K	L	

**STORMY WEATHER**  
NEUTRAL PLAIN SHADES



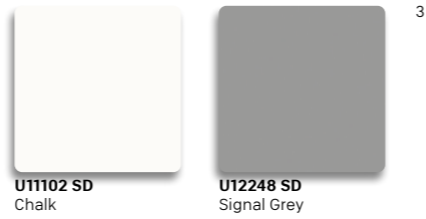
**U11027 SD**  
Icy White

**U11209 SD**  
Royal White



**W10100 SD**  
Interior White

**U12188 SD**  
Light Grey



**U11102 SD**  
Chalk

**U12248 SD**  
Signal Grey



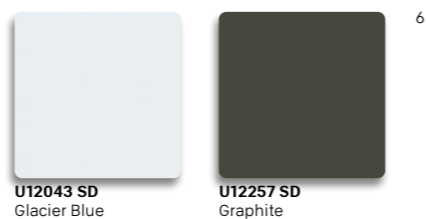
**W10140 SD**  
Frontal White

**U12082 SD**  
Greyhound



**W10410 SD**  
Opaque White

**U12146 SD**  
Shadow



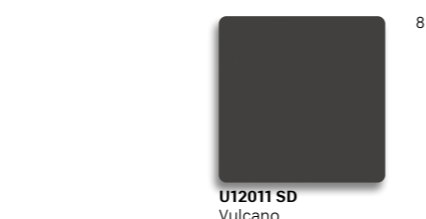
**U12043 SD**  
Glacier Blue

**U12257 SD**  
Graphite



**W10227 SD**  
Silk White

**U12007 SD**  
Graphite Black



**U12011 SD**  
Vulcano



**U12083 SD**  
Alabaster

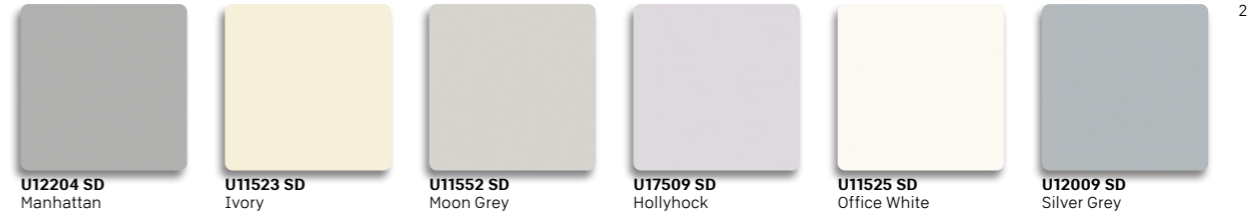
**U11036 SD**  
Alpine White

**U16065 SD**  
Swan

**U11106 SD**  
Powder White

**U11026 SD**  
Crystal White

**U18031 SD**  
Gull



**U12204 SD**  
Manhattan

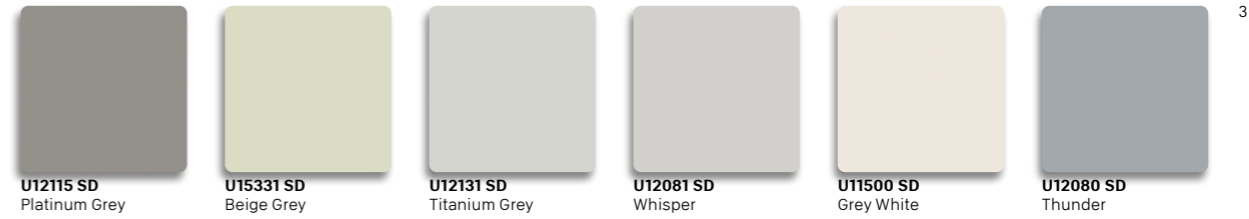
**U11523 SD**  
Ivory

**U11552 SD**  
Moon Grey

**U17509 SD**  
Hollyhock

**U11525 SD**  
Office White

**U12009 SD**  
Silver Grey



**U12115 SD**  
Platinum Grey

**U15331 SD**  
Beige Grey

**U12131 SD**  
Titanium Grey

**U12081 SD**  
Whisper

**U11500 SD**  
Grey White

**U12080 SD**  
Thunder



**U12290 SD**  
Anthracite Grey

**U16003 SD**  
Sand Beige

**U12168 SD**  
Cashmere

**U12044 SD**  
Dolphin Grey

**U12109 SD**  
Montana Grey

**U12010 SD**  
Platinum Grey



**U12018 SD**  
Basalt Grey

**U16001 SD**  
Sand Greige

**U16002 SD**  
Congo

**U16000 SD**  
Truffle Grey

**U12074 SD**  
Mud

**U18042 SD**  
Blue Shadow



**U12986 SD**  
Grey

**U12090 SD**  
Bora Grey

**U12091 SD**  
Sharky Grey

**U19024 SD**  
Reed Green

**U18044 SD**  
Smoke



**U12231 SD**  
Slate Grey

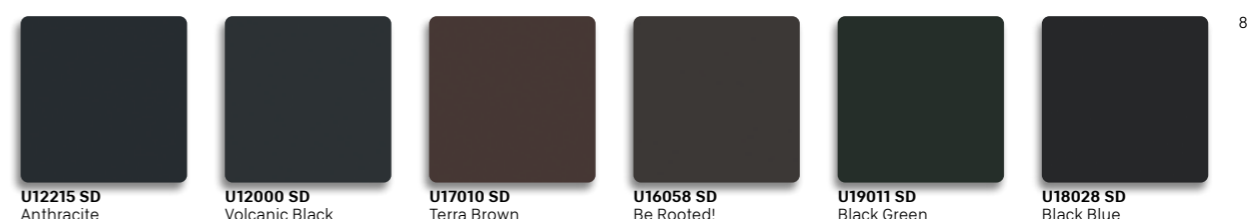
**U12233 SD**  
Metallic Black

**U12211 SD**  
Lava

**U12092 SD**  
Zonda Grey

**U19027 SD**  
Herb

**U18043 SD**  
Poseidon



**U12215 SD**  
Anthracite

**U12000 SD**  
Volcanic Black

**U17010 SD**  
Terra Brown

**U16058 SD**  
Be Rooted!

**U19011 SD**  
Black Green

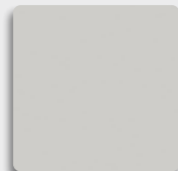
**U18028 SD**  
Black Blue

**DUROPAL SOLIDCOLOR**

The laminate SolidColor is coloured throughout, which makes it possible to realise contemporary and monochrome designs completely without visible edges. Also available in the product version SolidColor XTreme with anti-fingerprint effect!

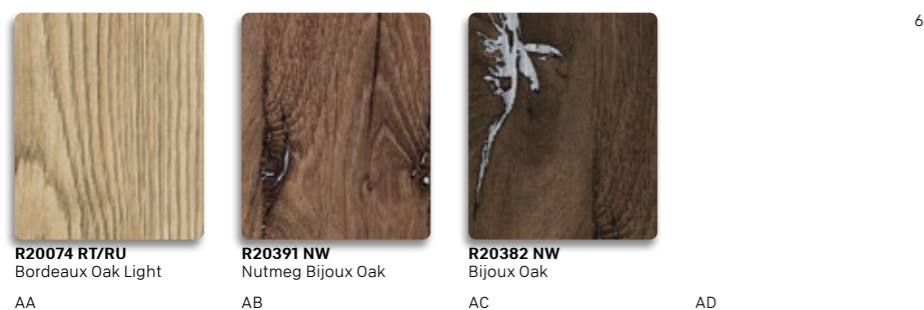
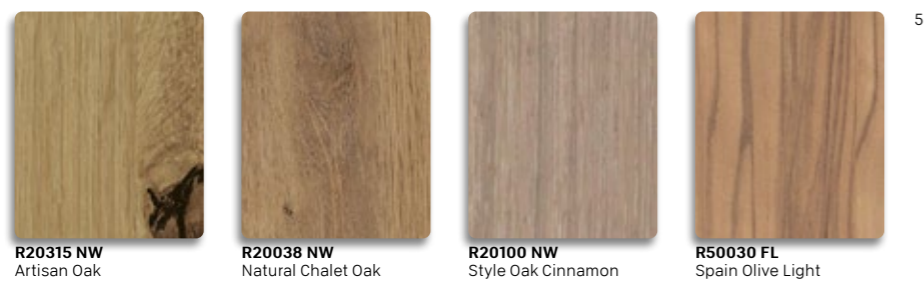
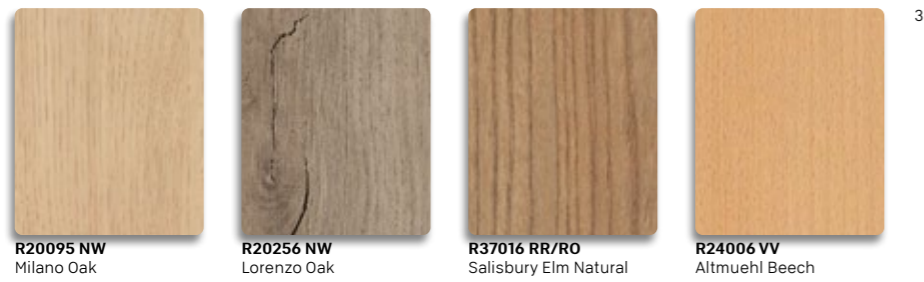


**U11102 SM**  
Chalk

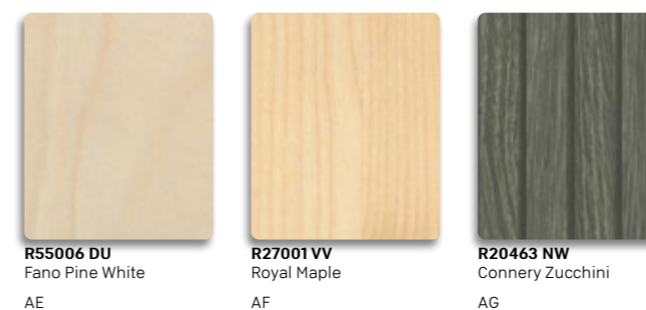
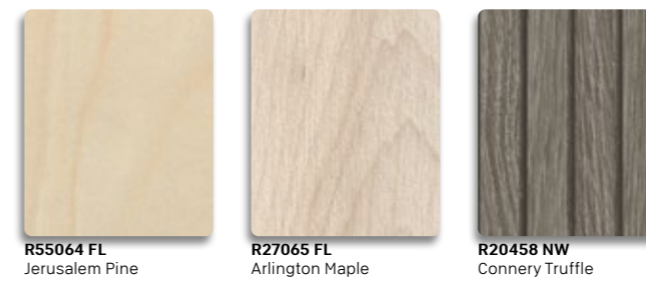
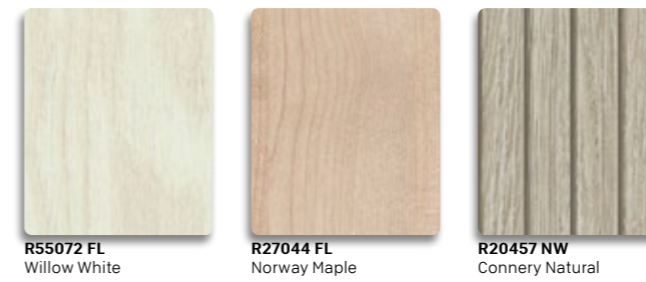


**U12188 SM**  
Light Grey

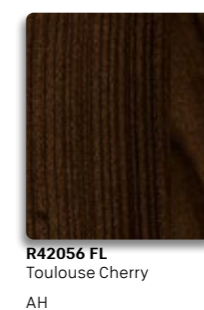
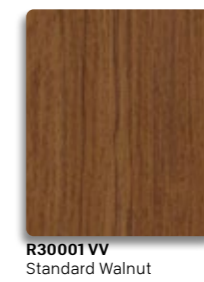
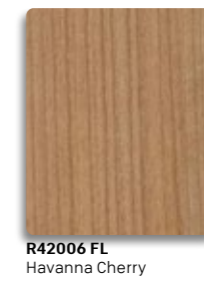
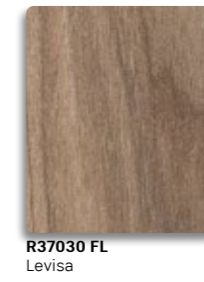
**SUMMERTIME**  
NATURAL WOODS



**BEYOND THE SEA**  
NORDIC WOODS



**TEA FOR TWO**  
TRADITIONAL  
REDDISH WOODS



**BLACK COFFEE**  
BLACK AND  
WHITE WOODS



**AS TIME GOES BY**  
GREY AGED WOODS



**R20128 RT/RU**  
Sonoma Oak Light



**R20039 RT/RU**  
Grey Sonoma Oak



**R20006 RT/RU**  
Sonoma Oak



**R20409 RR/RO**  
Artisan Oak Grey



**R20027 RT/RU**  
Pale Lancelot Oak



**R20064 NW**  
Grey Mountain Oak



**R20286 NW**  
Italian Oak



**R20031 RT/RU**  
Truffle Sonoma Oak



**R37017 RR/RO**  
Salisbury Elm Grey



**R55089 DU**  
Oregon Pine



**R20351 NW**  
Flamed Wood

AJ



**R55004 DU**  
Ponderosa Pine

AK

**PIANOMAN**  
CLASSIC DARK WOODS



**R50095 NW**  
Laos Teak

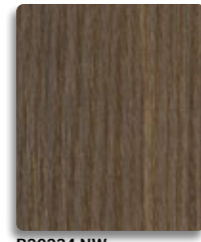


**R20456 RR/RO**  
Balvenie Oak Tobacco

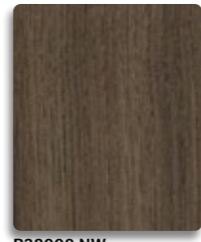


**R30011 NW**  
Madison Walnut

1



**R20234 NW**  
Dark Springfield Oak



**R38000 NW**  
Chestnut



**R30013 NW**  
Altamira Walnut Dark

2



**R55087 DU**  
Valetta Pine



**R20020 RR/RO**  
Mocha Piemont Oak



**R30159 NW**  
Preston

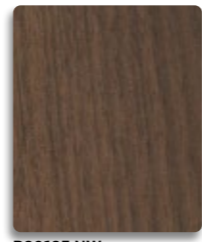
3



**R30157 NW**  
Caletta



**R20065 NW**  
Dark Mountain Oak



**R30135 NW**  
Okapi Walnut

4



**R20404 NW**  
Dark Aberdeen



**R20033 NW**  
Dark Oak



**R30021 FL**  
Milano Walnut

5



**R50004 RT/RU**  
Natural Sangha Wenge

AL



**R34024 FL**  
Portland Ash Dark

AM



**R30158 FL**  
Noce Giovannelli

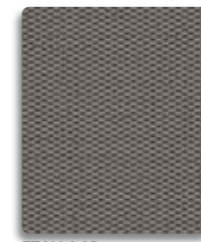
AN

6

**CATCH OF THE DAY**  
MATERIAL DECORS



**F79030 SD**  
Diva



**F76184 SD**  
Silver Mesh



**F79028 SD**  
Bronze Piquée



**F76044 CA/CE**  
Bellato Grey

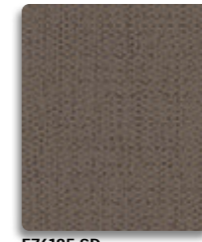
1



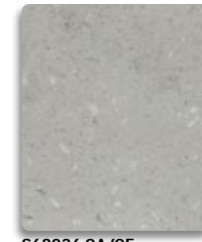
**F76172 SE**  
Alux Rosé



**F76112 SE**  
Inox Grey



**F76185 SD**  
Bronze Mesh



**S68036 CA/CE**  
Cento

2



**F76160 SE**  
Alux Champagne



**F76158 SE**  
Alux Gold



**F76110 SD**  
Kito Bronze



**F79031 SD**  
Jungle Blue

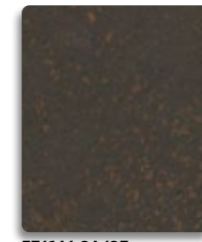
3



**F76171 SE**  
Alux Violet



**F76159 SE**  
Alux Caviar

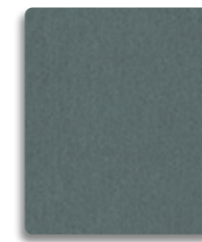


**F76146 CA/CE**  
Terrazzo Bronze

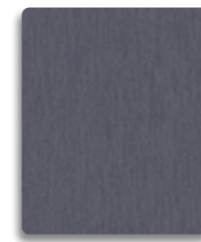


**S60036 CA/CE**  
Classic Concrete

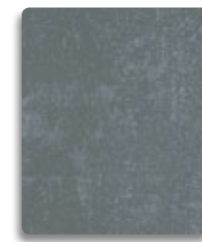
4



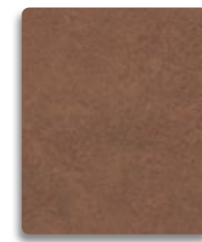
**F76186 SE**  
Dark Green Alux



**F76183 SE**  
Dark Blue Alux

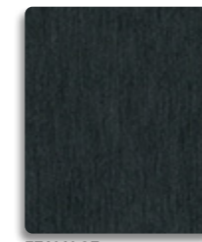


**F76113 SD**  
Metex Silver



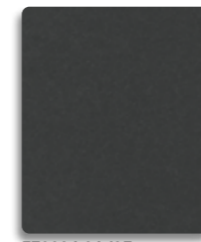
**F76142 CA/CE**  
Terracotta

5



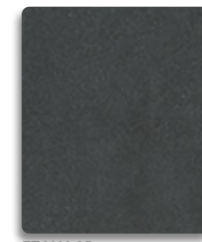
**F76141 SE**  
Alux Black

AO



**F79934 CA/CE**  
Ferro Black

AP



**F76111 SD**  
Kito Steel

AQ



**F76001 CA/CE**  
Loftec

AR

6

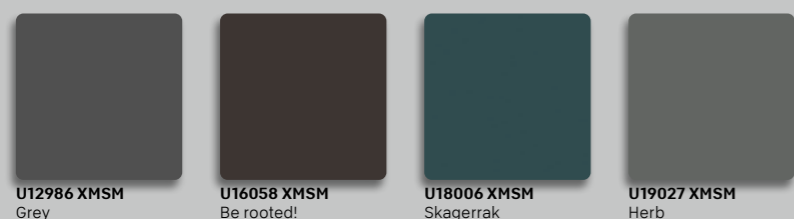
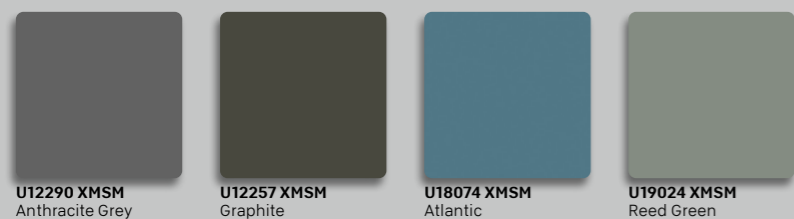
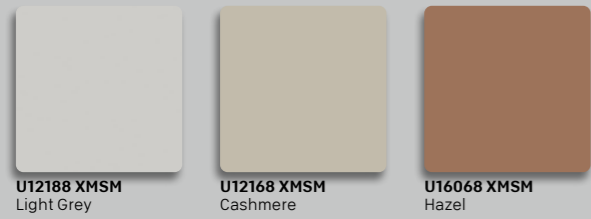
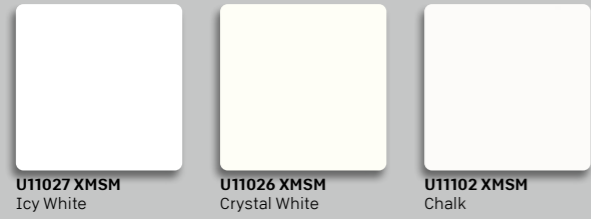
Our selection of stone decors can be found in the table on the back.

# XTREME PRODUCTS

## X DUROPAL XTREME



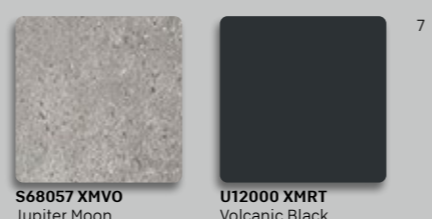
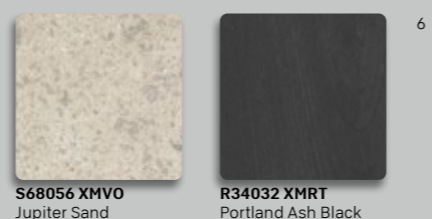
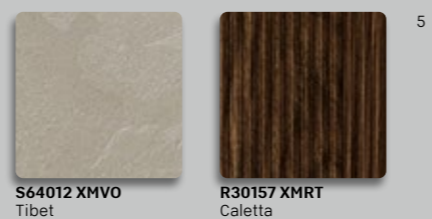
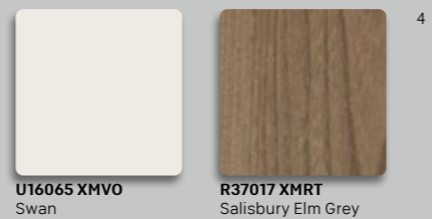
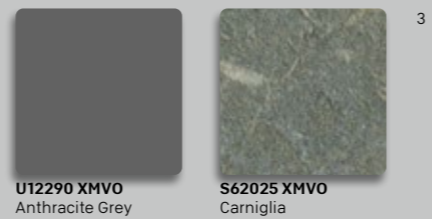
Extremely matt appearance meets high durability. The high-pressure laminate for sophisticated ideas – postformable, easy to clean and resistant to fingerprints and traces of grease.



AS AT AU AV

## X TOUCH DUROPAL XTREME TOUCH

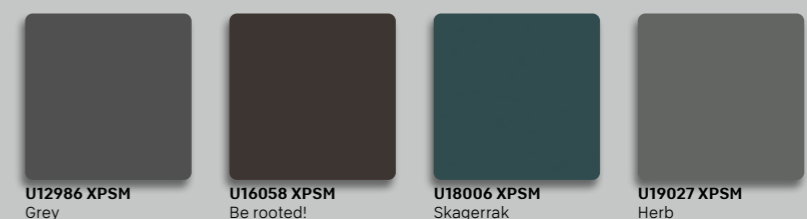
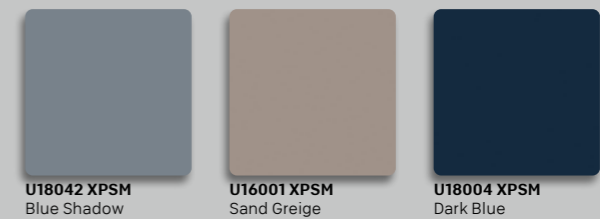
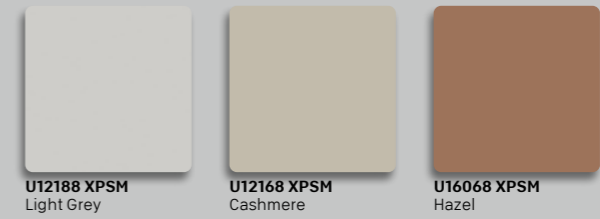
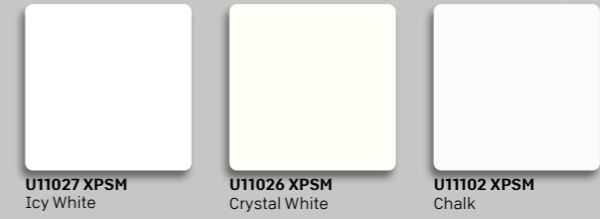
Duropal XTreme Touch combines the high quality properties of Duropal XTreme with a natural-looking stone or wood texture for vertical and especially horizontal applications.



AW AX

## X PLUS DUROPAL HPL XTREME PLUS

Significantly more scratch-resistant than comparable matt surfaces, the supermatt Duropal HPL XTreme plus with its outstanding anti-fingerprint effect and easy-to-clean surface withstands the demanding requirements of everyday life – even on horizontal, heavily used surfaces and edges.



BA BB BC BD

## SOLID X DUROPAL SOLIDCOLOR XTREME

Duropal SolidColor XTreme combines the high quality properties of Duropal XTreme with a decor-identical through-coloured core for a virtually seamless look and monochrome design.



AY AZ

# SERVICE

## ADVICE

You are welcome to contact our specialists directly if you have any questions related to our products being used in the door sector, or any other applications. Please send us an email, and we will contact you in person as soon as we can!

[sales@fleiderer.com](mailto:sales@fleiderer.com)



DESIGN COLLECTION 2025-2028

Stock programme

Decor Reference	Coordinates	Surface texture Design Collection	Express Collection	Reflection value	Next NCS code	Pearlescent	RAL	HPL for Doors 2,150 x 1,300 x 0,8 mm 1 other formats from stock * SolidColor	Duropol HPL 4,100 x 1,300 x 0,8 mm	Duropol HPL 2,800 x 2,070 x 0,8 mm	Duropol XTreme (XMSM) 2,800 x 2,070 x 0,8 mm 4,100 x 1,300 x 0,8 mm Duropol XTreme Touch (XMRT/XMVO) Duropol HPL XTreme plus (XPSM) 4,100 x 1,300 x 0,8 mm	Duropol SolidColor XTreme (XMSM) Duropol SolidColor 4,100 x 1,300 x 0,8 mm	Duropol SolidColor 2,800 x 2,070 x 0,8 mm	DecoBoard P2 2,800 x 2,100 mm * 2,655 x 2,100 mm	DecoBoard P2 3,200 x 2,100 mm * auch in 4,100 x 2,100 mm
W10100	Interior White	Q2	SD	0.85	S0502-G50Y		9003	SD	SD	SD				SD - 16 / 18 / 19 / 25	SD - 16 / 18 / 19*
W10140	Frontal White	Q4	SD	0.81	S0603-G80Y		9010	SD	SD	SD				SD - 16 / 19	SD - 18 / 19 / 25
W10227	Silk White	Q7	SD	0.79	S0502-G		9003	SD	SD	SD					
W10410	Opaque White	Q5	SD	0.82	S0502-Y		9016	SD	SD	SD				SD - 16 / 19 / 25 *SD - 16 / 18 / 19	SD - 18 / 19*
U11026	Crystal White	W1, AT1, BB1	SD	0.88	S0502-G50Y		9010	SD, XMSM, XPSM	SD	SD	XMSM, XPSM	SD, SM, XMSM	SD, SM	SD - 16 / 19 / 25	
U11027	Icy White	Q1, AS1, BA1	SD	0.82	S0505-R60B			SD, XMSM, XPSM	SD	SD	XMSM, XPSM			SD - 18 / 19	
U11036	Alpine White	T1	SD	0.86	S0500-N		9003	SD	SD	SD					
U11102	Chalk	N5, Q3, BC1	HG, SD	0.85	S0502-G		9003	HG, SD, SM*, XMSM, XPSM	HG, SD	HG, SD	XMSM, XPSM	SD, SM	SD, SM	SD - 16 / 19 / 25	
U11106	Powder White	V1	SD	0.83	S0502-R			SD	SD	SD					
U11209	Royal White	R1	SD	0.81	S0500-N		9003	SD	SD	SD				SD - 16 / 18 / 19 / 25	SD - 18 / 19
U11500	Grey White	W3	SD	0.66	S1502-Y		9002	SD	SD	SD					
U11506	Ivory White	C1	SD	0.79	S0804-G90Y		1013	SD	SD	SD					
U11509	Magnolia	B1	SD	0.76	S1005-Y20R		1013	SD	SD	SD				SD - 19	
U11523	Ivory	T2	SD	0.79	S0804-Y50R		9001	SD	SD	SD					
U11525	Office White	W2	SD	0.75	S1002-G50Y			SD	SD	SD					
U11552	Moon Grey	U2	SD	0.76	S1002-Y50R			SD	SD	SD					
U12000	Volcanic Black	T8, AT7, AW2, AX7, BB7	DU, FL, HG, NW, RR, RO, SD	0.06	S8502-B		9005	DU, FL, HG, NW, RR, SD, XMSM, XMRT, XMVO, XPSM	DU, FL, HG, NW, RR, SD	DU, FL, HG, NW, RR, SD	XMSM, XMRT, XMVO, XPSM			SD - 16 / 19 / 25 *SD - 18 / 19	SD - 19
U12007	Graphite Black	R7	SD	0.07	S8500-N		9017	SD	SD	SD					
U12009	Silver Grey	X2	SD	0.49	S2502-B			SD	SD	SD					
U12010	Platinum Grey	X4	SD	0.31	S4502-B		7045	SD	SD	SD					
U12011	Vulcano	R8, AY6	SD	0.08	S8502-B		7021	SD, XMSM*	SD	SD		SD, XMSM	SD, SM		
U12018	Basalt Grey	S5	SD	0.15	S6500-N		7012	SD	SD	SD				SD - 16 / 19	
U12043	Glacier Blue	Q6	SD	0.84	S0502-B			SD	SD	SD					
U12044	Dolphin Grey	V4, AT3, BB3	SD	0.53	S2502-R			SD, XMSM, XPSM	SD	SD	XMSM, XPSM				
U12074	Mud	W5	SD	0.2	S5502-Y		7039	SD	SD	SD					
U12080	Thunder	X3	SD	0.37	S3502-B		7040	SD	SD	SD				SD - 19	
U12081	Whisper	V3	SD	0.66	S1502-R		7047	SD	SD	SD					
U12082	Greyhound	R4	SD	0.19	S5000-N		7037	SD	SD	SD					
U12083	Alabaster	S1	SD	0.73	S1000-N			SD	SD	SD					
U12090	Bora Grey	U6	SD	0.31	S4502-R		7036	SD	SD	SD					
U12091	Sharky Grey	V6	SD	0.25	S5502-R			SD	SD	SD					
U12092	Zonda Grey	V7	SD	0.17	S6502-R			SD	SD	SD					
U12109	Montana Grey	W4	SD	0.56	S2002-G50Y			SD	SD	SD					
U12115	Platinum Grey	S3, AS3, BA3	SD	0.28	S4500-N			SD, XMSM, XPSM	SD	SD	XMSM, XPSM			SD - 19	
U12131	Titanium Grey	U3	SD	0.66	S1502-Y50R			SD	SD	SD					
U12146	Shadow	R5	SD	0.19	S6000-N			SD	SD	SD					
U12168	Cashmere	U4, AT2, BB2	SD	0.51	S2002-Y50R			SD, XMSM, XPSM	SD	SD	XMSM, XPSM			SD - 16 / 19 / 25	
U12188	Light Grey	O5, R2, AS2, BA2	SD	0.58	S2000-N		7035	SD, SM*, XMSM, XPSM	SD	SD	XMSM, XPSM	SD, SM	SD, SM	SD - 16 / 19 / 25 *SD - 18	
U12204	Manhattan	S2	SD	0.46	S3000-N			SD	SD	SD					
U12211	Lava	U7	SD	0.13	S7005-Y50R			SD	SD	SD				SD - 19	
U12215	Anthracite	S8	SD	0.11	S8000-N			SD	SD	SD					
U12231	Slate Grey	S7	SD	0.1	S7502-B			SD	SD	SD					
U12233	Metallic Black	T7, AS7, BA7	SD	0.08	S8000-N		7016	SD, XMSM, XPSM	SD	SD	XMSM, XPSM			SD - 19	
U12248	Signal Grey	R3	SD	0.37	S4000-N			SD	SD	SD					
U12257	Graphite	R6, AT5, BB5	SD	0.16	S7000-N			SD, XMSM, XPSM	SD	SD	XMSM, XPSM			SD - 16 / 19 / 25	
U12290	Anthracite Grey	S4, AS5, AW3, BA5	SD	0.16	S6500-N			SD, XMSM, XMVO, XPSM	SD	SD	XMSM, XMVO, XPSM			SD - 19	

1 2,150 x 915 / 950 / 1,050 x 0,8 mm  
2,350 x 950 / 1,300 x 0,8 mm  
3,050 x 1,300 x 0,8 mm (not in SolidColor)

2 HPL: 2,800 x 2,070 x 0,8 mm  
- without overlay, vertical use only

DESIGN COLLECTION 2025-2028

Stock programme

Decor Reference	Coordinates	Surface texture Design Collection	Express Collection	Reflection value	Next NCS code	Pearlescent	RAL	HPL for Doors 2,150 x 1,300 x 0,8 mm 1 other formats from stock * SolidColor	Duropol HPL 4,100 x 1,300 x 0,8 mm	Duropol HPL 2,800 x 2,070 x 0,8 mm	Duropol XTreme (XMSM) 2,800 x 2,070 x 0,8 mm 4,100 x 1,300 x 0,8 mm Duropol XTreme Touch (XMRT/XMVO) Duropol HPL XTreme plus (XPSM) 4,100 x 1,300 x 0,8 mm	Duropol SolidColor XTreme (XMSM) Duropol SolidColor 4,100 x 1,300 x 0,8 mm	Duropol SolidColor 2,800 x 2,070 x 0,8 mm	DecoBoard P2 2,800 x 2,100 mm * 2,655 x 2,100 mm	DecoBoard P2 3,200 x 2,100 mm * auch in 4,100 x 2,100 mm
U12986	Grey	S6, AS6, BA6	SD	0.13	S7500-N			SD, XMSM, XPSM	SD	SD	XMSM, XPSM				
U15006	Joy	A2	SD	0.7	S1040-Y			SD	SD	SD					
U15007	Blossom	E1	SD	0.69	S1010-Y70R			SD	SD	SD				SD - 19	
U15008	Caramel	B4	SD	0.33	S3030-Y20R			SD	SD	SD					
U15009	Desert	A5	SD	0.6	S1030-Y10R			SD	SD	SD				SD - 19	
U15010	Dijon	A6	SD	0.36	S3020-Y10R			SD	SD	SD				SD - 19	
U15011	Torrone	A7	SD	0.15	S6020-Y10R			SD	SD	SD					
U15110	Iguana	L4	SD	0.36	S3050-G80Y			SD	SD	SD					
U15115	Gorse Yellow	A4	SD	0.46	S1070-Y10R		1032	SD	SD	SD					
U15133	Stone Grey	C5	SD	0.52	S2005-Y20R		7044	SD	SD	SD					
U15190	Cuvo	C6	SD	0.44	S3005-Y20R			SD	SD	SD				SD - 19	
U15193	Cuando	C7	SD	0.21	S6005-Y20R		7006	SD	SD	SD					
U15194	Zinc Yellow	A3	SD	0.65	S0560-Y		1018	SD	SD	SD					
U15246	Mango	B2	SD	0.57	S1050-Y20R		1017	SD	SD	SD					
U15331	Beige Grey	T3	SD	0.7	S1505-G90Y		1013	SD	SD	SD					
U15559	Pastel Yellow	B5	SD	0.75	S1015-Y20R			SD	SD	SD					
U15579	Egg Yolk Yellow	B3	SD	0.52	S0570-Y20R		1003	SD	SD	SD					
U16000	Truffle Grey	V5	SD	0.26	S5005-Y50R			SD	SD	SD					
U16001	Sand Greige	T5, AT4, BB4	SD	0.37	S3005-Y50R			SD, XMSM, XPSM	SD	SD	XMSM, XPSM				
U16002	Congo	U5	SD	0.32	S4005-Y50R			SD	SD	SD				SD - 16 / 19 / 25	
U16003	Sand Beige	T4	SD	0.55	S2005-Y50R			SD	SD	SD				SD - 19	
U16007	Light Beige	A1	SD	0.75	S0907-Y10R		1015	SD	SD	SD					
U16009	Golden Orange	C2	SD	0.5	S1060-Y30R		1034	SD	SD	SD					
U16010	Orange	C3	SD	0.35	S1070-Y40R		2011	SD	SD	SD					
U16012	Antelope	C4	SD	0.22	S3060-Y30R			SD	SD	SD					
U16037	Powder	D5	SD	0.45	S3010-Y70R			SD	SD	SD					
U16051	Siena Red	D2	SD	0.2	S3050-Y70R		2001	SD	SD	SD					
U16058	Be rooted!	V8, AT6, BB6	SD	0.1	S7502-R		8019	SD, XMSM, XPSM	SD	SD	XMSM, XPSM				
U16065	Swan	U1, AW4	SD	0.79	S0603-Y80R			SD, XMVO	SD	SD	XMVO			SD - 19	
U16066	Amy	E5	SD	0.6	S1510-Y70R			SD	SD	SD				SD - 19	
U16067	Inca	B6	SD	0.35	S3020-Y30R			SD	SD	SD					
U16068	Hazel	B7, AU2, BC2	SD	0.2	S4030-Y40R			SD, XMSM, XPSM	SD	SD	XMSM, XPSM				
U16166	Salsa	D3	SD	0.15	S4040-Y70R		8004	SD	SD	SD				SD - 19	
U16179	Cuba Libre	D6	SD	0.37	S3010-Y60R			SD	SD	SD					
U17005	Carmine Red	E2	SD	0.17	S2070-Y90R		3000	SD	SD	SD					
U17008	Ruby Red	E3	SD	0.11	S3560-R		3003	SD	SD	SD					
U17010	Terra Brown	U8	SD	0.09	S8005-Y80R			SD	SD	SD					
U17012	Coco	D7	SD	0.14	S6010-Y90R			SD	SD	SD					
U17013	Mimose	F1	SD	0.66	S0520-R20B			SD	SD	SD					
U17014	Hydrangea	F2	SD	0.34	S1050-R20B			SD	SD	SD					
U17019	Cranberry	F3	SD	0.13	S4040-R20B			SD	SD	SD					
U17031	Bordeaux	E4	SD	0.1	S5040-Y90R		3011	SD	SD	SD					
U17035	Lotus	D1	SD	0.77	S0505-Y90R			SD	SD	SD					
U17040	Blush	E6	SD	0.3	S3020-Y80R			SD	SD	SD				SD - 19	
U17054	Burgundy	E7	SD	0.08	S6030-R		3005	SD	SD	SD					
U17141	Orchidea	F4	SD	0.08	S7020-R20B		4007	SD	SD	SD					
U17271	Oxide Red	D4	SD	0.11	S5040-Y80R			SD	SD	SD					
U17500	Royal blue	F7	SD	0.08	S8005-R80B		5004	SD	SD	SD					
U17501	Rose	F5	SD	0.52	S2010-R30B			SD	SD	SD					
U17505	Plum	F6	SD	0.24	S5010-R30B			SD	SD	SD					
U17509	Hollyhock	V2	SD	0.72	S1005-R50B			SD	SD	SD					
U18001	Sky Blue	G6	SD	0.22	S4020-R80B		5014	SD	SD	SD					
U18002															

DESIGN COLLECTION 2025-2028

Stock programme

Table with columns: Decor Reference, Coordinates, Surface texture Design Collection, Express Collection, Reflection value, Next NCS code, Pearlescent, RAL, HPL for Doors, Duropal HPL, Duropal XTreme (XMSM), Duropal XTreme Touch (XMRT/XMVO), Duropal HPL XTreme plus (XPSM), Duropal SolidColor XTreme (XMSM), Duropal SolidColor, DecoBoard P2, DecoBoard P2. Rows include various color and material options like Palander, Stratus, Black Blue, etc.

1 2,150 x 915 / 950 / 1,050 x 0.8 mm  
2,350 x 950 / 1,300 x 0.8 mm  
3,050 x 1,300 x 0.8 mm (not in SolidColor)

2 HPL: 2,800 x 2,070 x 0.8 mm  
- without overlay, vertical use only

DESIGN COLLECTION 2025-2028

Stock programme

Table with columns: Decor Reference, Coordinates, Surface texture Design Collection, Express Collection, Reflection value, Next NCS code, Pearlescent, RAL, HPL for Doors, Duropal HPL, Duropal XTreme (XMSM), Duropal XTreme Touch (XMRT/XMVO), Duropal HPL XTreme plus (XPSM), Duropal SolidColor XTreme (XMSM), Duropal SolidColor, DecoBoard P2, DecoBoard P2. Rows include various color and material options like Dark Springfield Oak, Lorenzo Oak, Italian Oak, etc.

1 2,150 x 915 / 950 / 1,050 x 0.8 mm  
2,350 x 950 / 1,300 x 0.8 mm  
3,050 x 1,300 x 0.8 mm (not in SolidColor)

2 HPL: 2,800 x 2,070 x 0.8 mm  
- without overlay, vertical use only

Stock programme

Decor Reference	Coordinates	Surface texture Design Collection	Express Collection	Reflection value	Next NCS code	Pearlescent	RAL	HPL for Doors 2,150 x 1,300 x 0,8 mm 1 other formats from stock * SolidColor	Duropal HPL 4,100 x 1,300 x 0,8 mm	Duropal HPL 2,800 x 2,070 x 0,8 mm	Duropal XTreme (XMVM) 2,800 x 2,070 x 0,8 mm 4,100 x 1,300 x 0,8 mm	Duropal XTreme Touch (XMRT/MVVO) Duropal HPL XTreme plus (XPSM) 4,100 x 1,300 x 0,8 mm	Duropal SolidColor XTreme (XMVM) Duropal SolidColor 4,100 x 1,300 x 0,8 mm	Duropal SolidColor 2,800 x 2,070 x 0,8 mm	DecoBoard P2 2,800 x 2,100 mm * 2,655 x 2,100 mm	DecoBoard P2 3,200 x 2,100 mm * auch in 4,100 x 2,100 mm
R50030	Spain Olive Light	AD5	FL	0.4				FL	FL	FL						
R50094	Nordic Teak	AG2	NW	0.58				NW	NW	NW						
R50095	Laos Teak	AL1	NW	0.21				NW	NW	NW						
R55001	Navarra Pine	AE2	DU	0.74				DU	DU	DU						
R55004	Ponderosa Pine	AK6	DU	0.27				DU	DU	DU						
R55006	Fano Pine White	AE6	DU	0.56				DU	DU	DU						
R55011	Anderson Pine White	AE1	DU	0.76				DU	DU	DU					DU - 19	
R55064	Jerusalem Pine	AE4	FL	0.51				FL	FL	FL					FL - 19	
R55072	Willow White	AE3	FL	0.64				FL	FL	FL						
R55087	Valetta Pine	AL3	DU	0.11				DU	DU	DU						
R55089	Oregon Pine	AK5	DU	0.43				DU	DU	DU						
F70002	Cava Beige		SD	0.47	S3005-Y20R	•				SD <sup>2</sup>						
F70008	Metallic Toffee		SD	0.14	S7010-Y30R	•				SD <sup>2</sup>						
F70014	Anthracite Metallic		SD	0.14	S6502-B	•				SD <sup>2</sup>						
F70015	Grey Metallic		SD	0.48	S3000-N	•				SD <sup>2</sup>					SD - 19	
F76001	Loftec	AR6	CA/CE	0.21				CA	CA	CE					CE - 19	
F76023	Brushed Aluminium		VV	0.39		•				VV	VV <sup>2</sup>					
F76044	Bellato Grey	AR1	CA/CE	0.46				CA	CA	CE						
F76110	Kito Bronze	AQ3	SD	0.25		•		SD	SD	SD <sup>2</sup>						
F76111	Kito Steel	AQ6	SD	0.11		•		SD	SD	SD <sup>2</sup>						
F76112	Inox Grey	AP2	SE	0.42		•		SE	SE							
F76113	Metex Silver	AQ5	SD	0.25		•		SD	SD	SD <sup>2</sup>						
F76141	Alux Black	AO6	SE	0.08		•		SE	SE							
F76142	Terracotta	AR5, AW1	CA/CE	0.17				CA, XMVO	CA	CE	XMVO					
F76146	Terrazzo Bronze	AQ4, AX1	CA/CE	0.1		•		CA, XMVO	CA	CE <sup>2</sup>	XMVO					
F76158	Alux Gold	AP3	SE	0.39		•		SE	SE							
F76159	Alux Caviar	AP4	SE	0.21		•		SE	SE							
F76160	Alux Champagne	AO3	SE	0.35		•		SE	SE							
F76171	Alux Violet	AO4	SE	0.25		•		SE	SE							
F76172	Alux Rosé	AO2	SE	0.42		•		SE	SE							
F76183	Dark Blue Alux	AP5	SE	0.15		•		SE	SE							
F76184	Silver Mesh	AP1	SD	0.18		•		SD	SD	SD <sup>2</sup>						
F76185	Bronze Mesh	AQ2	SD	0.18		•		SD	SD	SD <sup>2</sup>						
F76186	Dark Green Alux	AO5	SE	0.17		•		SE	SE							
F79028	Bronze Piquée	AQ1	SD	0.18		•		SD	SD	SD <sup>2</sup>						
F79030	Diva	AO1	SD	0.63		•		SD	SD	SD <sup>2</sup>						
F79031	Jungle blue	AR3	SD	0.73				SD	SD	SD						
F79934	Ferro Black	AP6, AX2	CA/CE	0.07				CA, XMVO	CA	CE	XMVO					
S60036	Classic Concrete	AR4	CA/CE	0.42				CA	CA	CE						
S62025	Corniglia	AX3		0.25				XMVO			XMVO					
S63009	Carrara Marble		SM	0.64				SM	SM	SM						
S63044	Caviar Black		SM	0.09				SM	SM	SM						
S63045	India White		SM	0.76				SM	SM	SM						
S63059	Larsos Marble		CA/CE	0.55				CA	CA	CE						
S63063	Botticino		CA/CE	0.46				CA	CA	CE						
S63066	Caviar Silver		SM	0.1		•		SM	SM	SM						
S63067	Caviar Gold		SM	0.11		•		SM	SM	SM						
S63068	Caviar Green		SM	0.12				SM	SM	SM						
S63070	Lugano Marble		CA/CE	0.34				CA	CA	CE						
S63077	Shiyan		CA/CE	0.35				CA	CA	CE						
S64012	Tibet	AW5		0.43				XMVO			XMVO					
S68036	Cento	AR2	CA/CE	0.47				CA	CA	CE						
S68055	Dumont		SD	0.44				SD	SD	SD						
S68056	Jupiter Sand	AW6	CA/CE	0.5		•		CA, XMVO	CA	CE	XMVO					
S68057	Jupiter Moon	AW7	CA/CE	0.31		•		CA, XMVO	CA	CE	XMVO					
M80000	Alu 1, Stainless Steel Effect		HG/SM	0.76	S3010-G					SM	HG <sup>3</sup>					
M80001	Alu 2, Nickel Effect		HG/SM	0.53	S4005-G50Y					SM	HG <sup>3</sup>					

<sup>1</sup> 2,150 x 915 / 950 / 1,050 x 0,8 mm  
2,350 x 950 / 1,300 x 0,8 mm  
3,050 x 1,300 x 0,8 mm (not in SolidColor)

<sup>2</sup> HPL: 2,800 x 2,070 x 0,8 mm  
– without overlay, vertical use only

<sup>3</sup> HPL: 2,800 x 2,070 x 0,8 mm  
The metal foil has got a visible longitudinal joint at 1,380 mm

# QUALITY



## PRECISION AS A PRINCIPLE: MADE IN GERMANY

Pfleiderer is addressing the challenge of manufacturing top-quality wood-based materials with its traditional, meticulous approach to doing business. With integrated quality, environmental, energy and safety management systems, a corporate culture that is based on its values and independent certification audits along the entire value creation chain. With environmental management systems that are certified according to ISO EN 14001 and ISO 50001, certifications according to FSC® (license code: FSC® C011773) and PEFC (license code: PEFC/04-32-0828), and also as a member of Qualitätsgemeinschaft Holzwerkstoffe, the German association of high-quality wood-based material manufacturers, we illustrate how much we value transparency for our customers and partners.

MADE IN GERMANY

## PIONEERING DETERMINATION A BRAND WITH TRADITION

Pfleiderer sets new standards when it comes to high-quality engineered wood materials with a particular focus on decorative products for furniture and interior design, exterior uses and proven structural wood construction solutions. Over 125 years of experience with the renewable wood material and a corporate philosophy that focuses strictly on sustainability make us the first choice for all trades, retailers, architects and planners who are looking for reliable solutions with groundbreaking added functional values to realise their ideas. As a German Standards “Brand of the Century” company, our standards and our commitment to quality and customer-orientation are particularly important to us.





Order samples online at any time:  
**[samples.pfleiderer.com](https://samples.pfleiderer.com)**

© Copyright 2026 Pfleiderer Deutschland GmbH.

This information is issued with great care. We do not however accept any responsibility for the accuracy, completeness and timeliness. There may be slight colour differences between the printed brochure image and the actual design.

Due to the continuous development and modification of our products, possible changes to the relevant standards, laws and regulations, our technical data sheets and product documents expressly do not represent a legally binding guarantee of the properties specified therein. In particular, no suitability for a specific purpose can be derived from this information. It is therefore the personal responsibility of the individual user to check the processing and suitability of the products described in this document for the intended use and to take into account the legal framework and the current state of the art. Furthermore, we expressly refer to the validity of our general terms and conditions.

You can find our general terms and conditions on our webpage: **[www.pfleiderer.com](https://www.pfleiderer.com)**

---



MADE IN GERMANY

**Good to know: the Pfleiderer quality promise.**

Pfleiderer wood-based panels stand for quality without compromise. We use sustainable raw materials and state-of-the-art production processes and we are fully committed to our site in Germany. For more information, visit **[quality.pfleiderer.com](https://quality.pfleiderer.com)**.

**Pfleiderer UK Limited** · Greenway House · Larkwood Way · Tytherington Business Park · Macclesfield · Cheshire SK10 2XR · England  
Tel.: +44 (0) 16 25 660 410 · [info-uk@pfleiderer.com](mailto:info-uk@pfleiderer.com) · [www.pfleiderer.com](https://www.pfleiderer.com)

**Pfleiderer Deutschland GmbH** · Ingolstädter Straße 51 · 92318 Neumarkt · Germany  
Tel.: +49 (0) 91 81 / 28 480 · Fax: +49 (0) 91 81 / 28 482 · [info@pfleiderer.com](mailto:info@pfleiderer.com) · [www.pfleiderer.com](https://www.pfleiderer.com)